

1-112 Flush Quarter-Turn L22-66

Tool operable, Flush design

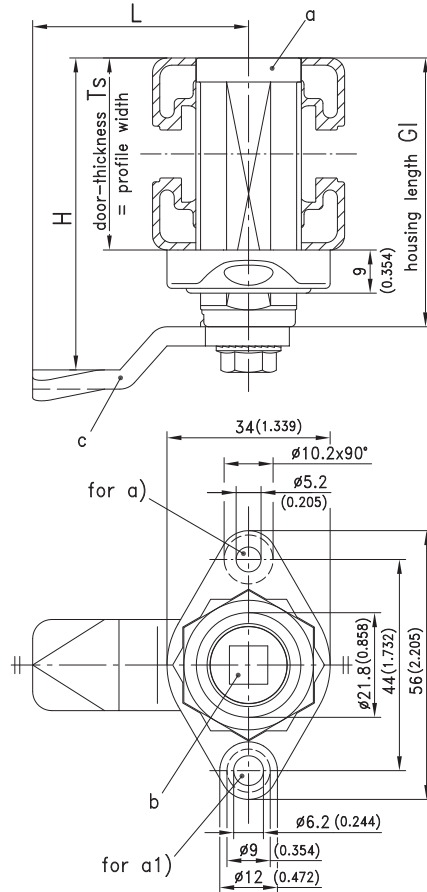


Product Notes:

- Flush design with no protrusion on the outside of the panel
- RH and LH application
- Quarter-Turn is secured with anti-rotation device using nut (M22 x 1.5mm)
- With the optional stop plate, the Quarter-Turn can be used with aluminum and steel profile frames without damage to the frame.

Material:

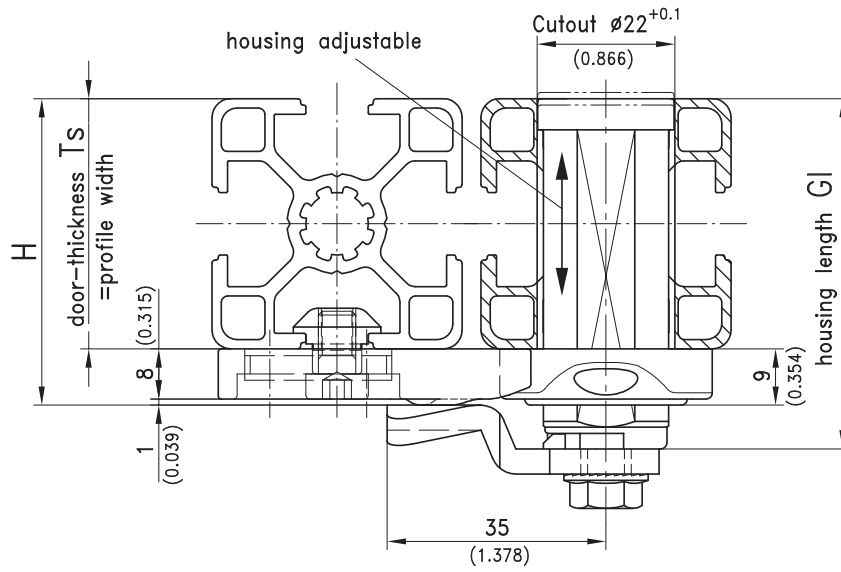
- Housing:** Zinc Die, Chrome Plated or Black
- Anti-rotation device:** Zinc Die, Zinc Plated
- Nut:** Steel, Zinc Plated
- Insert:** Zinc Die, Chrome Plated or Black Coated or Combination PA, Black/Zinc Die
- Cams:** Steel, Zinc Plated
- Adapter:** Zinc Die, Untreated
- Stop plate:** Zinc Die, Black



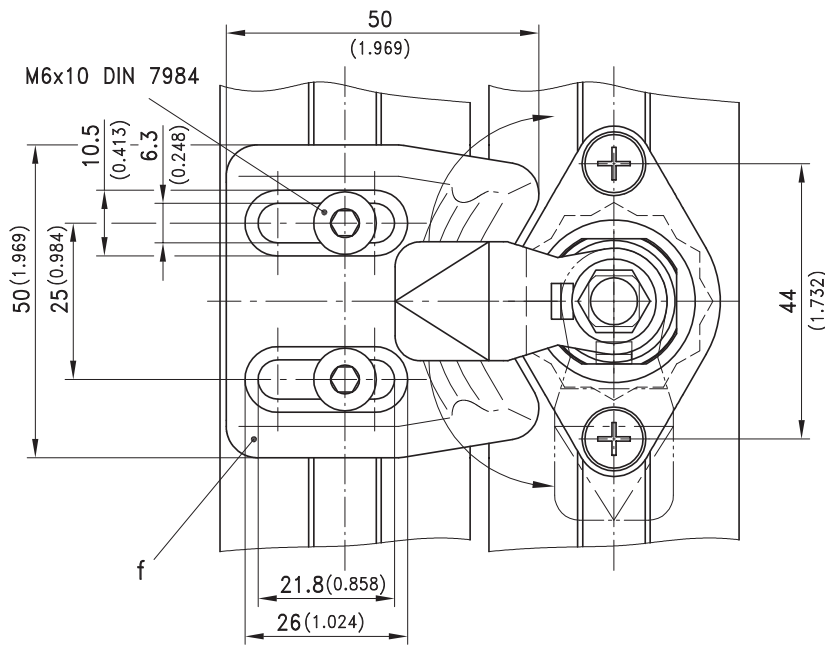
a) Housing with nut and anti-rotation device	Zinc Die Chrome Plated	Zinc Die Black	Adapter d) with Screw	See Page
GI				
Ts max.				
22	200-9088	200-9089	-	
36	200-9090	on request	200-9031	
42	200-9092	on request	200-9032	
46	200-9094	on request	200-9033	
56	200-9096	on request	200-9034	
66	200-9098	on request	200-9035	
a1) Housing a) but with nut M5/M6 (weld-stud) or flat-head screw on request.				
b) Insert				01.98, 01.99
Optional:				
c) Cams				01.101
e) Assembling adapter without O-ring	200-0003	200-0003		
f) Stop plate	265-3001.02	265-3001.02		
The anti-rotation device can also be ordered separately.	200-4609	200-4609		

1-112 Flush Quarter-Turn L22-66

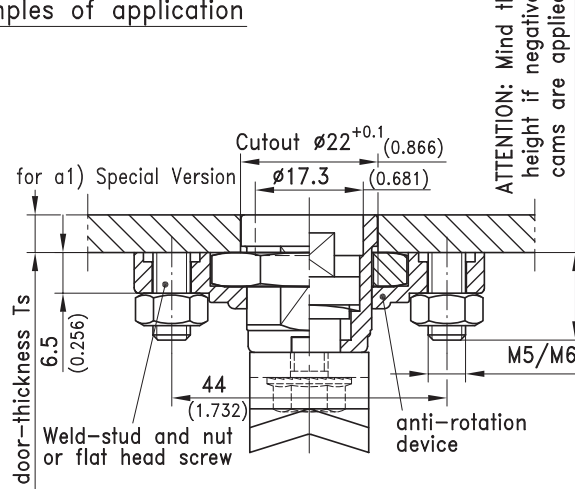
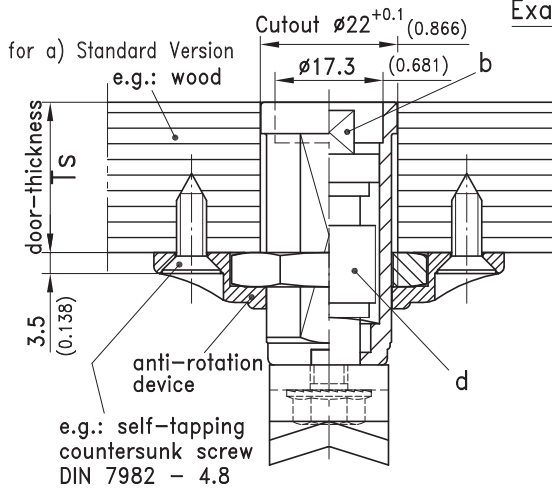
Tool operable, Flush design



View from inside



Examples of application



ATTENTION: Mind this height if negative cams are applied